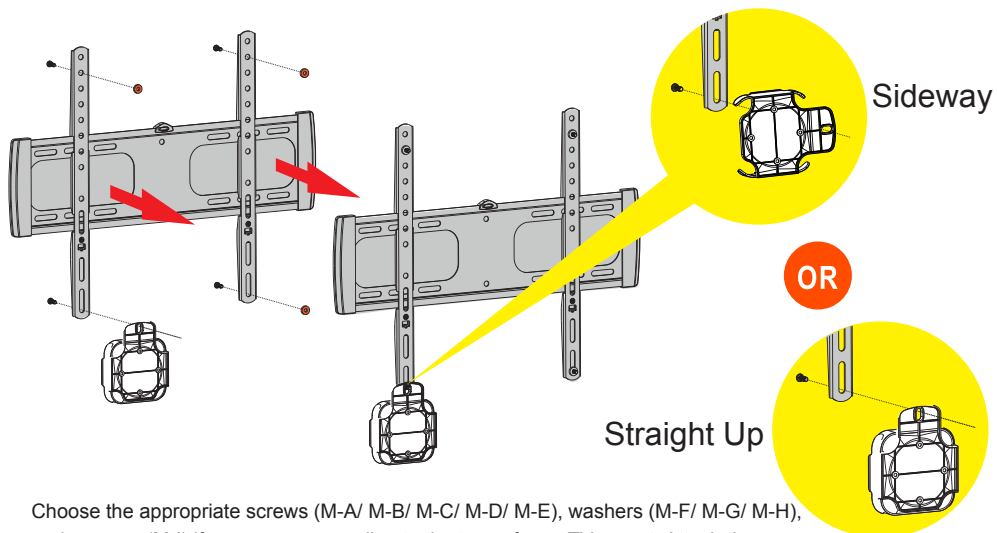
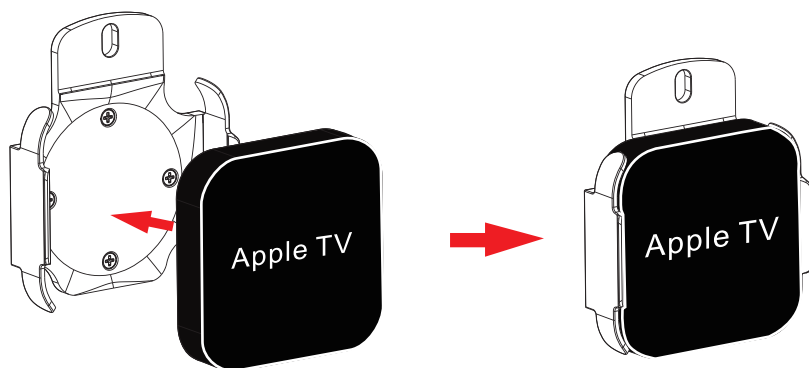


## 2 Attaching to a TV Wall Mount



Choose the appropriate screws (M-A/ M-B/ M-C/ M-D/ M-E), washers (M-F/ M-G/ M-H), and spacers (M-I) if necessary, according to the type of your TV mount. Attach the Apple TV Wall Mount to the TV Wall Mount using a Phillips screwdriver.

## 3 Snapping the Apple TV onto the Mount



## Maintenance

Please check that the mount is secure and safe to use at regular intervals. If there are questions regard any of the instructions or warnings; please contact your local distributor (OR) contact QualGear technical support via email at [support@qualgear.com](mailto:support@qualgear.com)

**QualGear**  
Accessories that Inspire.

**QG-AM-017-W**  
INSTALLATION MANUAL

## APPLE TV MOUNTING KIT



Scan the QR Code™ below  
for more info about this product:



Compatible with



Apple Airport Express Base Station



Apple TV 2nd Generation Apple TV 3rd Generation

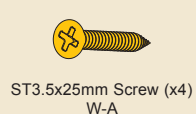
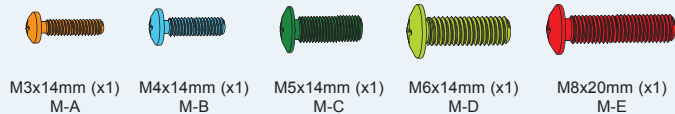
■ 1 Year Limited Warranty

■ Version September 2018

**NOTE**

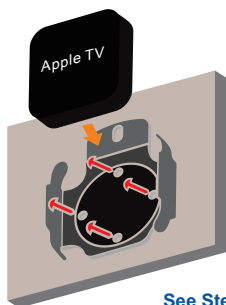
Please read the entire installation manual and check that all parts are included before you start installation and assembly.

## Hardware Package

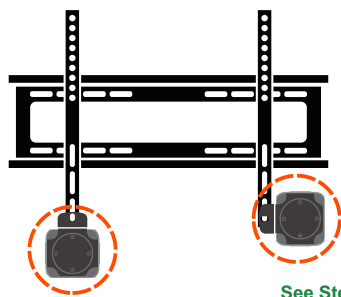


## Two Installation Options

### Mount to a wall surface



### Attach to a TV wall mount

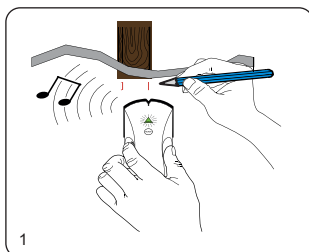


## 1a Mounting to a Wooden Stud Wall

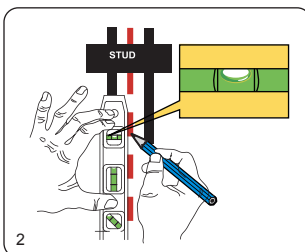


**NOTE**

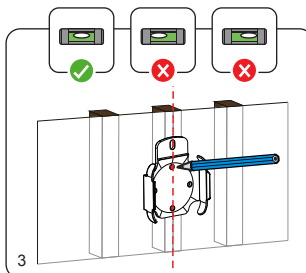
For concrete or brick wall mounting, see Step 1b. To attach to a TV wall mount, see Step 2.



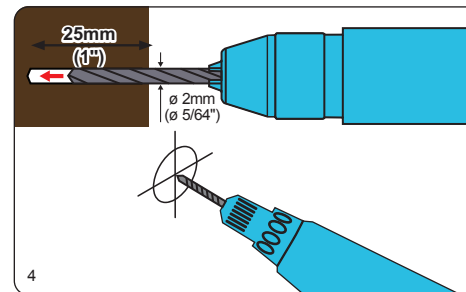
Using an edge-to-edge stud finder, find the edges of the stud.



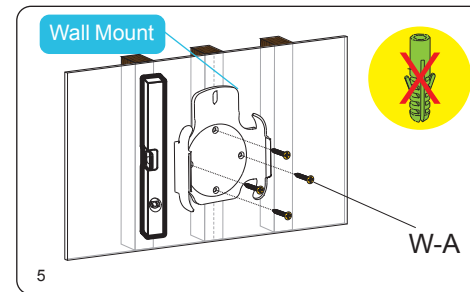
Using a level, mark the centerline of the stud.



Using the wall mount as a template, mark two holes for drilling on the centerline of the stud.

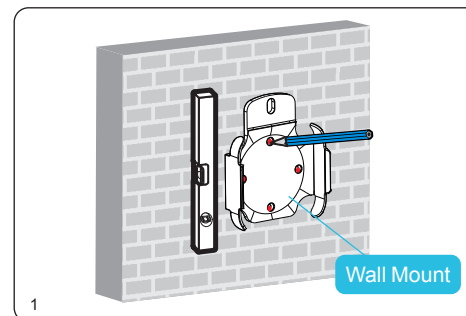


Using a power drill and 5/64" drill bit, drill pilot holes of 5/64" (2mm) diameter and at least 1" (25 mm) depth.

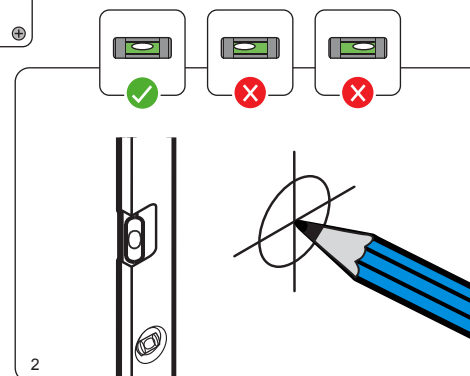


Using a Phillips screwdriver, mount the wall mount and fasten with the provided screws (W-A).

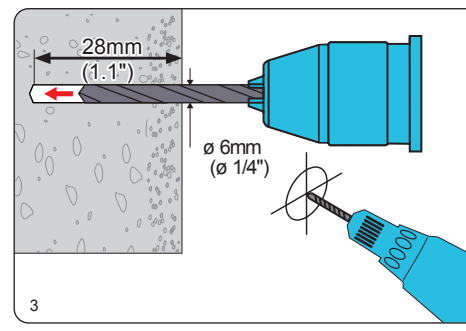
## 1b Mounting to a Concrete or a Brick Wall



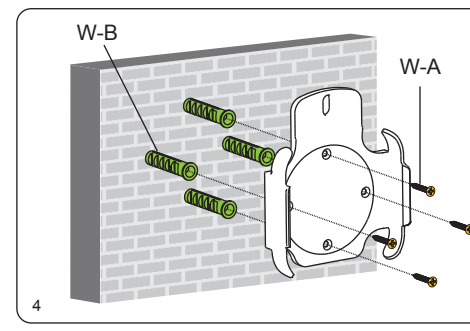
Use the wall mount as a template, place it against the wall where you want to install the TV.



Level the wall mount and mark four holes for drilling.



Using a power drill and 1/4" drill bit, drill pilot holes of 1/4" (6mm) diameter and at least 1.1" (28 mm) depth.



Place concrete anchors (W-B) in each hole. Tap each anchor flush with the wall using a hammer. Mount the wall mount and fasten screws (W-A) using a Phillips screwdriver.