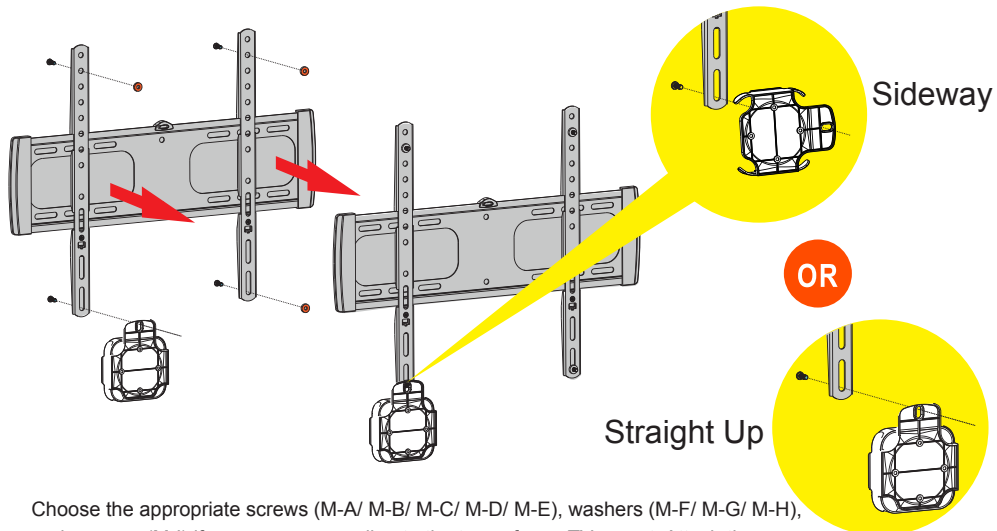
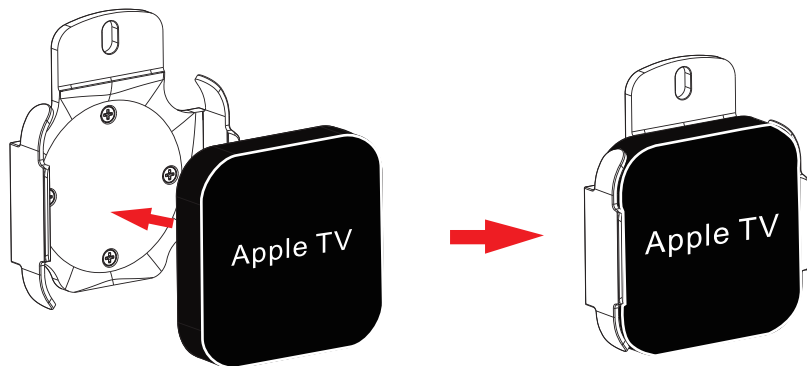


2 Attaching to a TV Wall Mount



Choose the appropriate screws (M-A/ M-B/ M-C/ M-D/ M-E), washers (M-F/ M-G/ M-H), and spacers (M-I) if necessary, according to the type of your TV mount. Attach the Apple TV Wall Mount to the TV Wall Mount using a Phillips screwdriver.

3 Snapping the Apple TV onto the Mount



Maintenance

Please check that the mount is secure and safe to use at regular intervals. If there are questions regard any of the instructions or warnings; please contact your local distributor (OR) contact QualGear technical support via email at support@qualgear.com

QualGear
Accessories that Inspire.

QG-AM-017
INSTALLATION MANUAL

APPLE TV MOUNTING KIT



Scan the QR Code™ below
for more info about this product:



Compatible with



Apple Airport Express Base Station



Apple TV 2nd Generation



Apple TV 3rd Generation

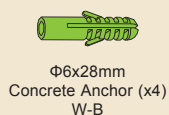
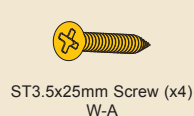
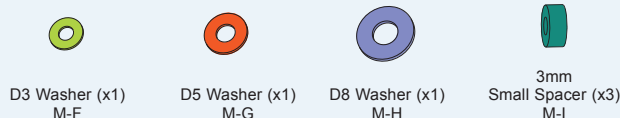
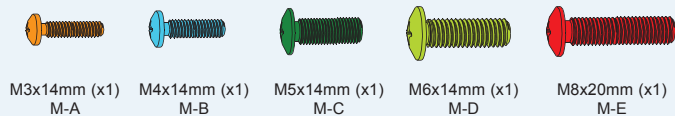
■ 1 Year Limited Warranty

■ Version September 2013

NOTE

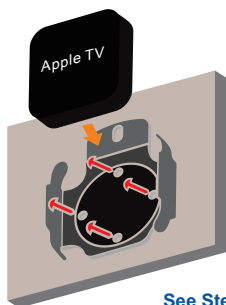
Please read the entire installation manual and check that all parts are included before you start installation and assembly.

Hardware Package



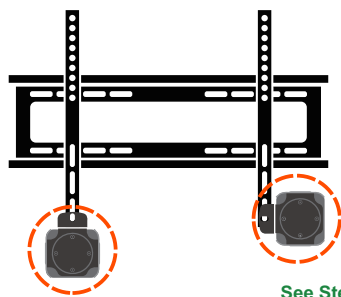
Two Installation Options

Mount to a wall surface



See Step 1a or 1b

Attach to a TV wall mount



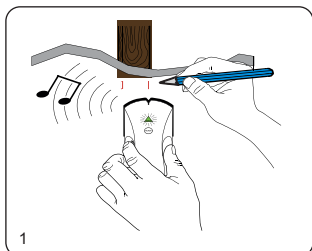
See Step 2

1a Mounting to a Wooden Stud Wall

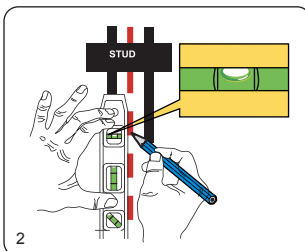


NOTE

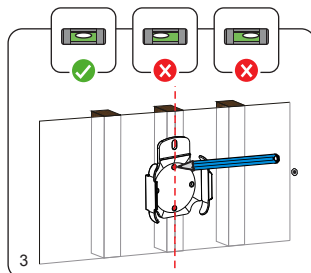
For concrete or brick wall mounting, see Step 1b. To attach to a TV wall mount, see Step 2.



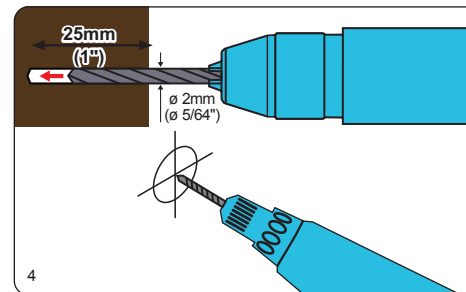
Using an edge-to-edge stud finder, find the edges of the stud.



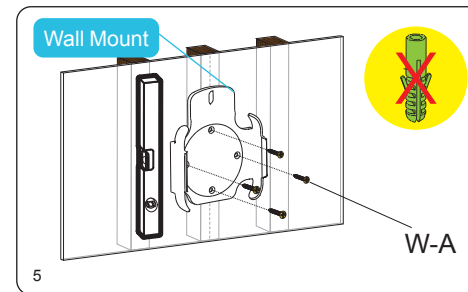
Using a level, mark the centerline of the stud.



Using the wall mount as a template, mark two holes for drilling on the centerline of the stud.

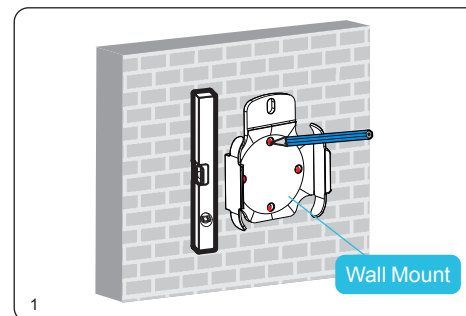


Using a power drill and 5/64" drill bit, drill pilot holes of 5/64" (2mm) diameter and at least 1" (25 mm) depth.

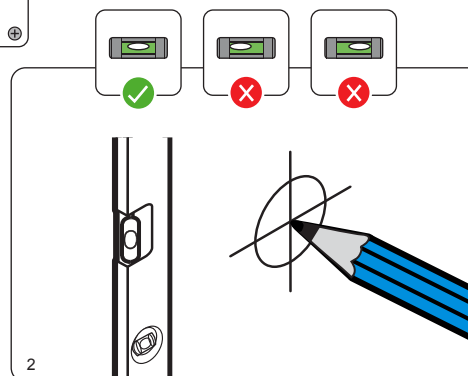


Using a Phillips screwdriver, mount the wall mount and fasten with the provided screws (W-A).

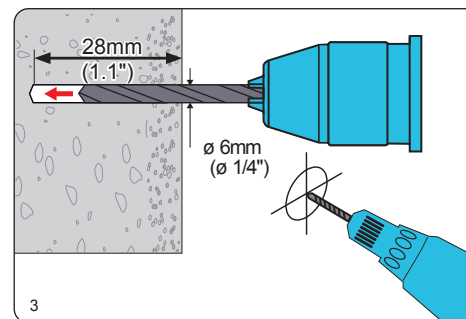
1b Mounting to a Concrete or a Brick Wall



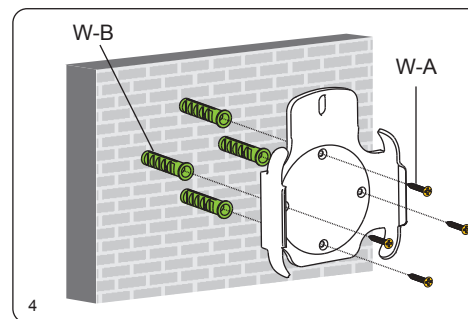
Use the wall mount as a template, place it against the wall where you want to install the TV.



Level the wall mount and mark four holes for drilling.



Using a power drill and 1/4" drill bit, drill pilot holes of 1/4" (6mm) diameter and at least 1.1" (28 mm) depth.



Place concrete anchors (W-B) in each hole. Tap each anchor flush with the wall using a hammer. Mount the wall mount and fasten screws (W-A) using a Phillips screwdriver.